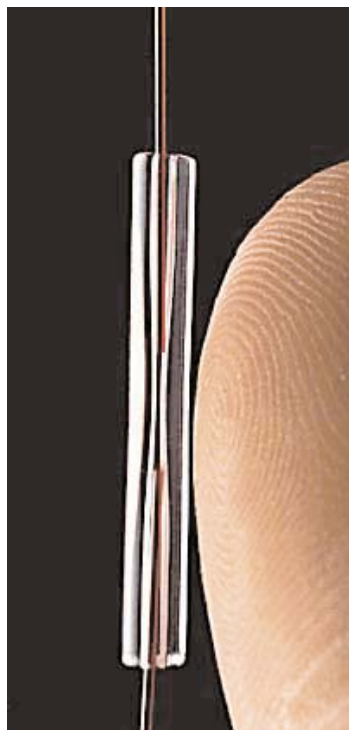


# Inner-Lok™

Quick Capillary Coupling ■ GC Column Union



## Inner-Lok™

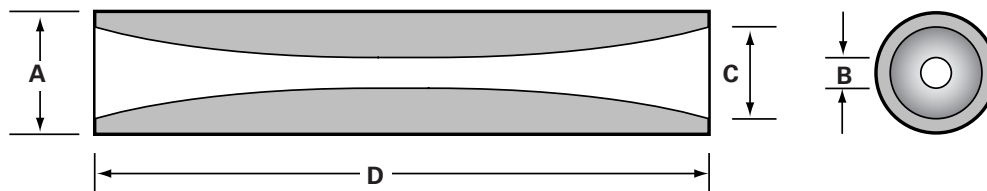
### Better Control of Critical Dimensions

The Inner-Lok connector is designed for quick, contamination-free coupling of Gas Chromatography (GC) columns and other polyimide coated fused silica tubing applications. It is a precision component which provides an excellent thermal and expansion match with Polymicro Technologies' most popular fused silica capillary tubings.

It is applied between two capillary ends using a friction fit. It does not apply concentrated localized pressure to the capillary, which might cause stress fractures. If needed, a drop of adhesive or polyimide can be applied to the external funnel area to secure the capillary.

- Repair broken columns
- Connect guard columns
- Connect transfer lines

- High quality quartz or fused silica
- Concentric tapered interior bore
- Press-tight friction fit



Product Descriptor:	Dimensions> Units>	A mm	B mm	C mm	D mm
TQNE2502000/38		2.00±0.50	0.250±0.050	0.785±0.050	38±3



18019 N. 25th Avenue • Phoenix, AZ 85023-1200  
 Voice: (602) 375-4100 Fax: (602) 375-4110  
 E-Mail: [sales@polymicro.com](mailto:sales@polymicro.com)  
 URL: <http://www.polymicro.com>

- Flexible Capillary
- Multimode Optical Fiber
- Specialty Assemblies
- Micro-Components